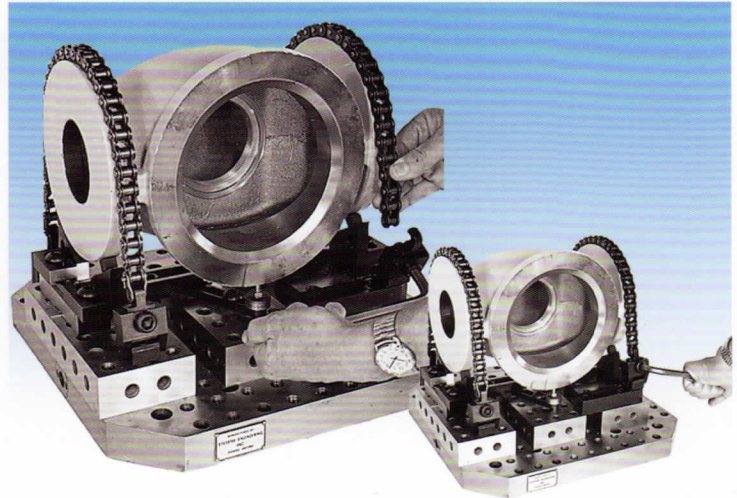


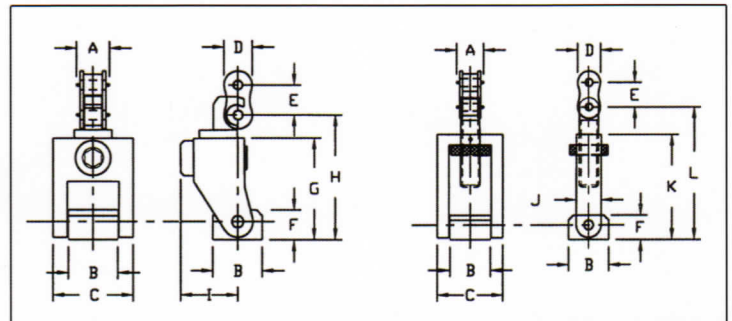
STEVEN'S INNOVATIONS

Chain Clamp

- Fast initial setup. Socket head cap screws are used for mounting each end of the chain clamp to a subplate or T-slotted table.
- Each standard duty kit P/N 20149 (clamping force up to 6,000 lbs.) includes a cam-locking hook assembly P/N 20150, a take-up unit P/N 20151 for adjusting chain tension, and a chain set P/N 20152. Any length chain up to 40 inches can thus be quickly assembled for various workpiece diameters.
- Each heavy duty kit P/N HD20149 (clamping force up to 12,000 lbs) includes a cam-locking hook assembly P/N HD20150, a take-up unit P/N HD20151, and a chain set P/N HD20152.
- Additional lengths of roller chain may be added for holding extra large workpieces.



The modular fixture above utilizes two chain clamps to secure the valve body casting. A standard Allen wrench is used to operate the cam-locking hook assembly.



Part No.	CHAIN	LENGTH	A	B	C	D	E	F	G	H	I	J	K	L
20149	#50	40"	.81	1.05	1.68	.58	.62	.62	2.15	2.50-2.70	1.18	.76	2.73	3.05-4.30
HD20149	#80	64"	1.28	1.75	2.50	.95	1.00	1.00	3.25	3.70-3.95	2.35	1.13	4.02	4.50-6.50

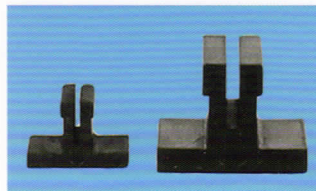
U.S. Patent #5,775,660

CHAIN CLAMP ACCESSORIES

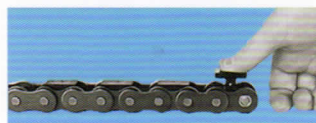
CHAIN CLAMP SHOES

- Plastic shoes snap into chain to protect finished surfaces.

P/N 10421 for use with P/N 20149



P/N HD10421 for use with P/N HD20149



HITCH PINS

Since workpiece sizes vary, differing lengths of chain may need to be assembled. Our new Hitch Pins which replace spring clips allow quicker and easier assembly & disassembly of chain sets.

P/N 9935A044

